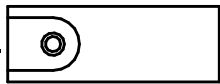
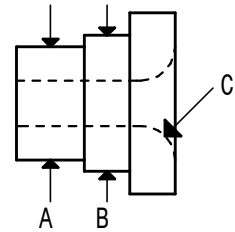
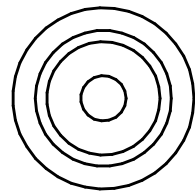
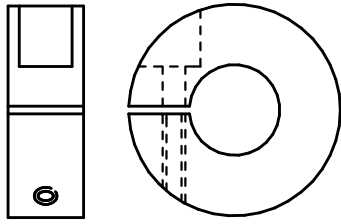


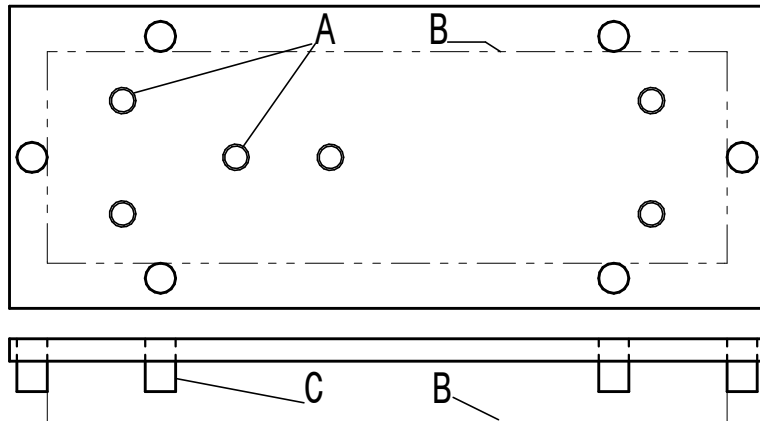
SK. 1 



NOTE

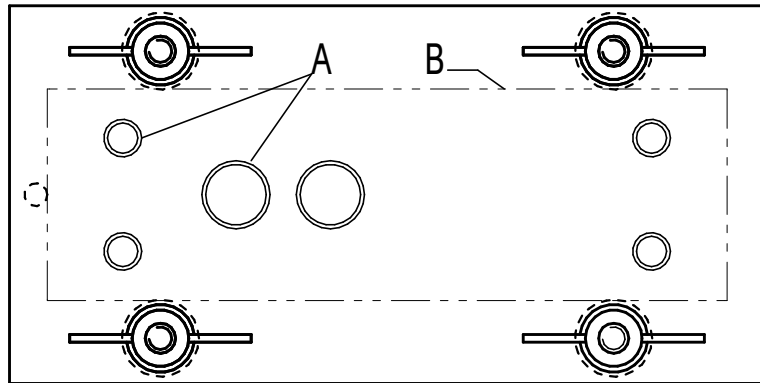
A TO BE A CLOSE SLIDING FIT IN THE JIGS TOP PLATE WITH B BEING A TIGHT FIT. EFFECT SHOWN EXAGGERATED.

C TO BE A GENEROUS BELL MOUTH OPENING IN THE BUSH TO HELP GUIDE THE DRILL BEING USED **SK. 4**

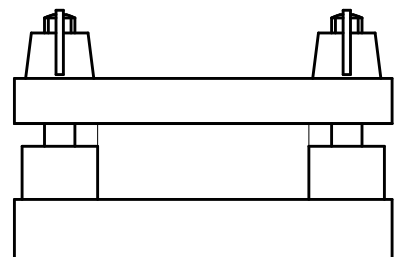
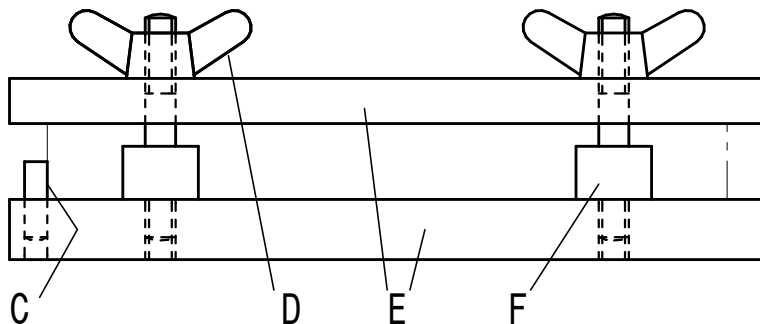


A DRILL GUIDE HOLES
B WORKPIECE
C WORKPIECE GUIDE PINS

SK. 2



A DRILL GUIDE HOLES
B WORKPIECE
C WORKPIECE END STOP
D WORKPIECE CLAMPING WING NUTS
E JIG TOP AND BOTTOM PLATES
F WORKPIECE AND TOP PLATE GUIDE POSTS



SK. 3