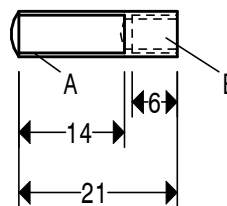


HOLES. A. 5 WIDE SLOT B. 6.1 2 OFF
 C. 6.1 SEE TEXT AND SK. 2.

NOTE. SCRIBE LINES Z AT 2° AS SHOWN

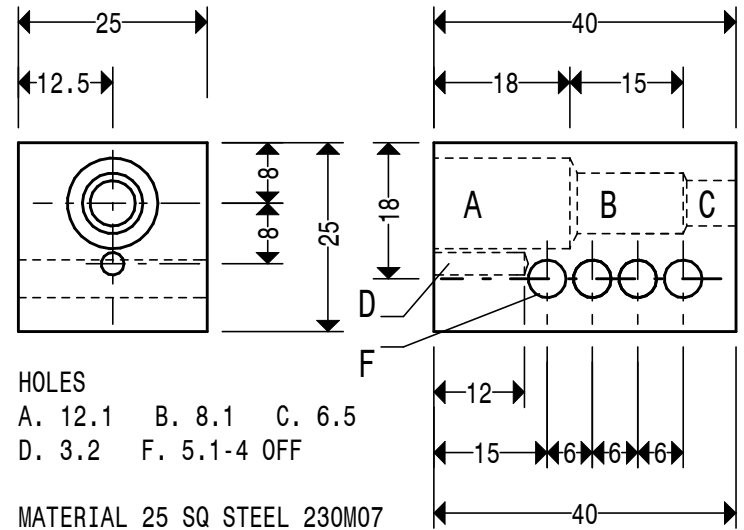
MATERIAL 50 X 50 X 6 BRIGHT STEEL ANGLE
 OR 60 X 60 X 6 SEE TEXT **REST 9**



THREADS
 A. 1/4" X 40 TPI ME THREAD
 B. M5

MATERIAL 1/4" DIA. STEEL 230M07
FEEDSCREW 5

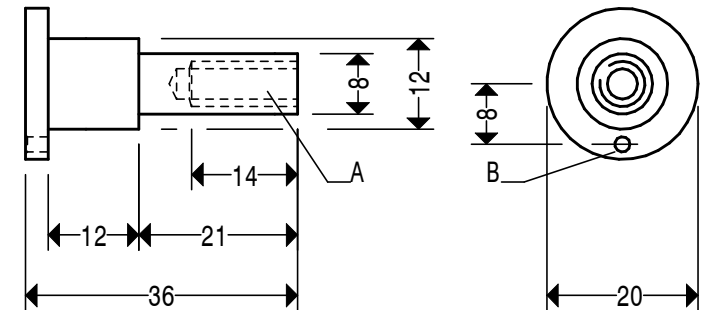
SHARPENING END MILLS



HOLES
 A. 12.1 B. 8.1 C. 6.5
 D. 3.2 F. 5.1-4 OFF

MATERIAL 25 SQ STEEL 230M07

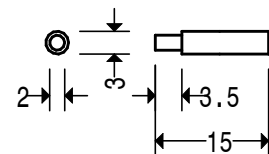
BODY 4



HOLES
 A. 1/4" X 40 TPI ME THREAD
 B. 2 SLIGHTLY COUNTER SUNK ON OUTER SIDE

MATERIAL. 20 DIA. STEEL 230M07

STOP 2



MATERIAL
 3 DIA. STEEL 230M07

PIN 3