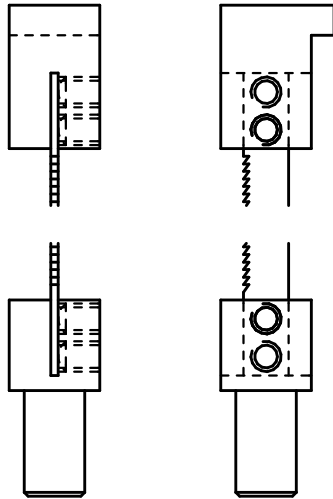
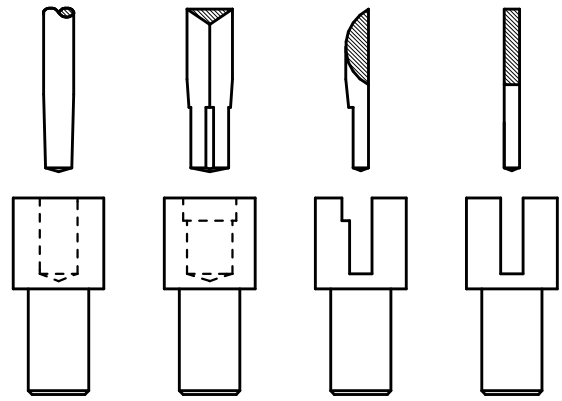


MATERIAL 12 DIA. STEEL 230M07  
 QTY 1 PER FILE  
BASIC FILE ADAPTER



SUGGESTED METHOD OF FITTING  
 A SAW BLADE TO THE MACHINE.  
 DO SEE THE COMMENTS IN THE TEXT  
 REGARDING USING IT IN THIS WAY.

SAW BLADE MOUNTING SK.3



NOTES

1. REMOVE THE CORNERS OF A TRIANGULAR FILE FOR A DISTANCE OF 8MM TO CREATE A HEXAGON
2. MAKE A FLAT 8MM LONG ON THE CURVED SURFACE OF A HALF ROUND FILE.
3. WHERE THE END OF A FILE IS MODIFIED, SHAPE THE CAVITY IN THE ADAPTOR SO THAT FULL SHAPE CAN ENTER FOR A FEW MILLIMETRE.
4. SQUARE FILES CAN ENTER A ROUND HOLE, OR BE MODIFIED IN A SIMILAR MANNER TO THE TRIANGULAR FILE

FILE MOUNTING METHODS SK.2