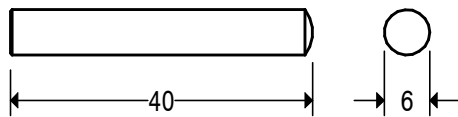


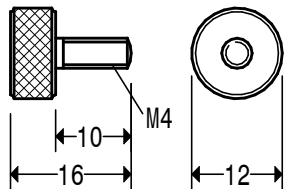
HOLES A 8 B M4 C M4  
 MAKE HOLE C IN POSITION X IN ONE PART  
 AND POSITION Y IN THE OTHER.  
 MATERIAL 25 DIA. STEEL 270M20  
 QTY 2 OFF (SEE NOTE ABOVE)

**PILLAR** **3**



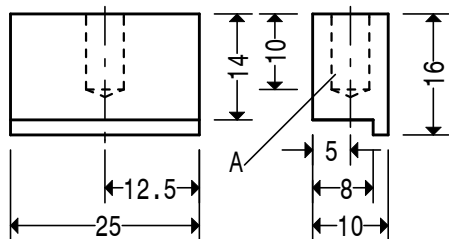
MATERIAL 6 DIA. STEEL 230M20  
 QTY 2 OFF

**WORKPIECE SUPPORT** **9**



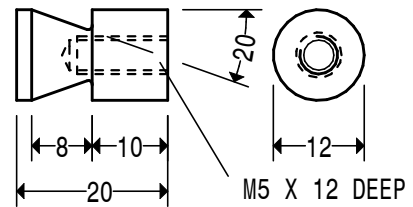
MATERIAL  
 12 DIA. STEEL 230M20  
 QTY 6 OFF

**CLAMP SCREW** **5**



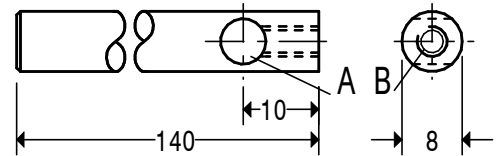
HOLE A 5  
 MATERIAL 16 X 10 STEEL 070M20  
 QTY 2 OFF

**CLAMP** **2**



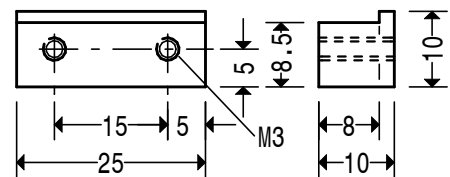
MATERIAL 12 DIA. STEEL 230M07  
 QTY. 2 OFF

**PILLAR MOUNTING POST** **8**



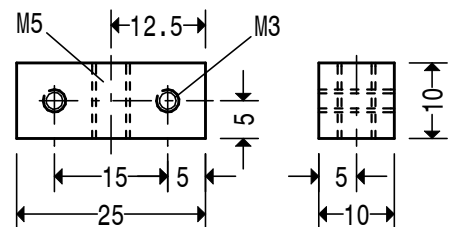
HOLES A 6 B M4  
 MATERIAL 8 DIA. STEEL 230M20  
 QTY 2 OFF

**BAR** **7**



MATERIAL 10 SQ. STEEL 230M20  
 QTY 2 OFF

**ENDPIECE** **6**



MATERIAL 10 SQ. STEEL 230M20  
 QTY 2 OFF

**CLAMP SCREW MOUNT** **1**