

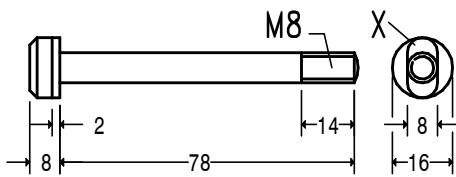
MATERIAL  
16mm DIAMETER  
STEEL 230M07

HOLE SIZE A. 3.5 SEE TEXT

QUANTITY 1 OFF

MODIFICATION,  
REDUCE LENGTH  
REMOVE KEY "X"

LOCK SCREW 5A

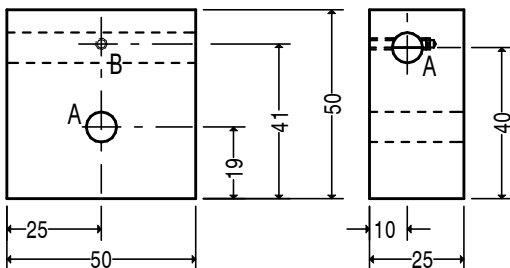


MATERIAL  
16mm DIAMETER  
STEEL 230M07

QUANTITY 1 OFF

ROUND END (FILE) AS AT X  
TO FIT END OF SLOT  
MODIFICATION, REDUCE LENGTH

LOCK SCREW 5



HOLE SIZES A 8.2mm 2 OFF  
B M3 17 DEEP

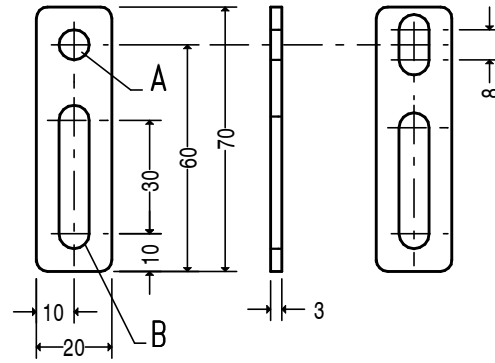
MATERIAL  
50mm SQUARE STEEL 230M07

QUANTITY 1 OFF

MODIFICATION  
M3 TAPPED HOLE B ADDED

LOWER ARM SPACER 18

MODIFICATION TWO



ARM Y

ARM Z

HOLE SIZES A 8.2mm 1 OFF  
B SLOTS 8mm WIDE

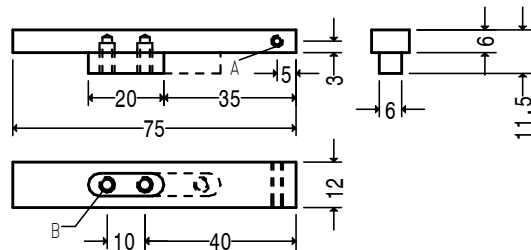
MATERIAL  
20mm X 3mm STEEL 080A15

QUANTITY 1 OFF ARM Y  
1 OFF ARM Z

MODIFICATION  
THICKNESS REDUCED FROM 8MM TO 3MM  
EXISTING ARMS CAN BE REDUCED BY MILLING

SIDE ARMS 20

MODIFICATION ONE



HOLE SIZES A. M3 1 OFF B M4 X 8 DEEP 2 OFF

MATERIAL 12mm SQUARE STEEL 230M07

QUANTITY 1 OFF

MODIFICATION  
KEY BELOW FENCE REDUCED IN LENGTH

ADJUSTABLE FENCE 11

MODIFICATION THREE

THE PART NUMBERS CONFORM TO  
THOSE ON THE ORIGINAL DRAWINGS.

GRINDING REST, MODIFICATIONS

05-02-2012

GrRestMod02