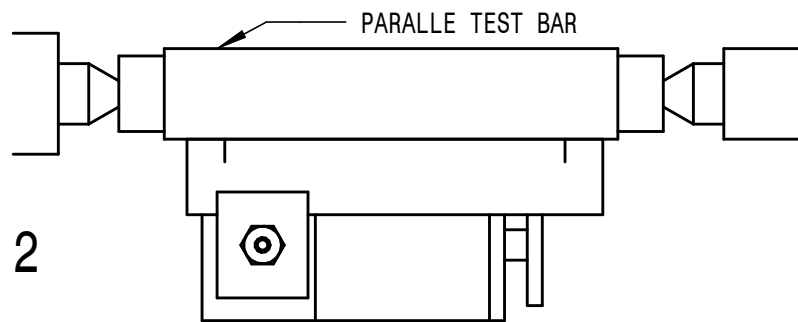
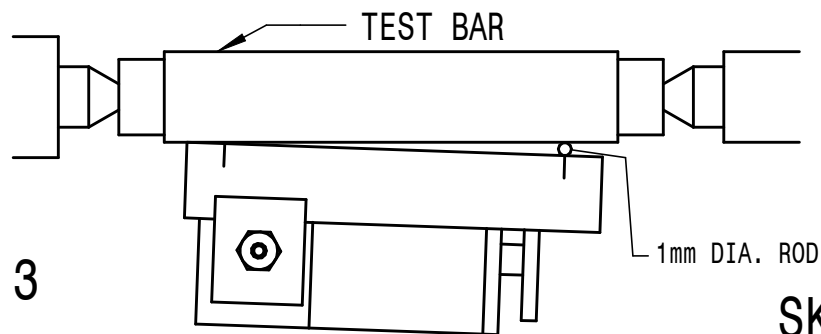


1
SET TOP SLIDE PARALLEL WITH THE LATHE'S AXIS



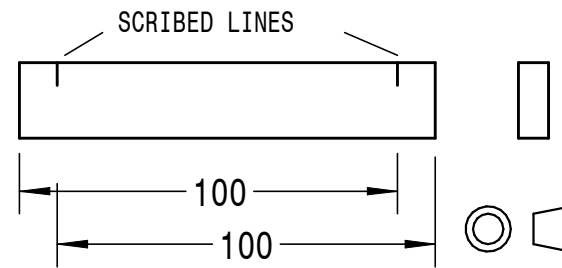
2
FIT SETTING PLATE TO TOP SLIDE AND AGAINST TEST BAR



3
SWING TOP SLIDE, USING 1mm ROD AT 100mm MARK TO SET ANGLE

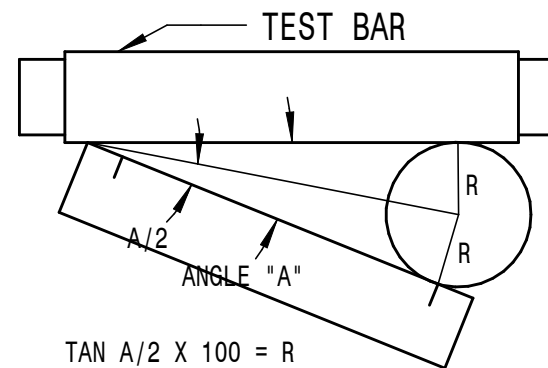
SETTING TOP SLIDE TO AN ANGLE OF 1 IN 100

SK. 1



OTHER DIMENSIONS TO SUIT MATERIAL
AVAILABLE SUGGESTED LENGTH 110mm

SETTING PLATE SK. 2



$$\tan A/2 \times 100 = R$$

$$\text{DIAMETER} = 200 \times \tan A/2$$

SK. 3

CALCULATION OF DIAMETER
FOR ANGLE "A"

