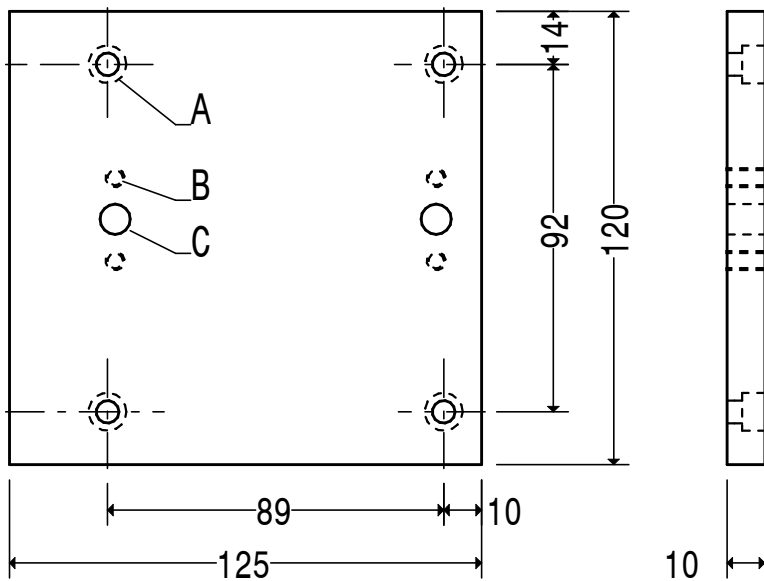


HOLES A 6.5 4 OFF B 10 1 OFF

MATL. 125 X 10 STEEL 070M20

QTY. 1 OFF TOP PLATE C11



HOLES A 6.5 CB 10.5 6.5 DEEP 4 OFF

B M5 4 OFF C 8.5 2 OFF

POSITION HOLES B AND C TO SUIT
MOUNTING ARRANGEMENT. SEE AS4

MATL. 125 X 10 STEEL 070M20

QTY. 1 OFF BOTTOM PLATE C17