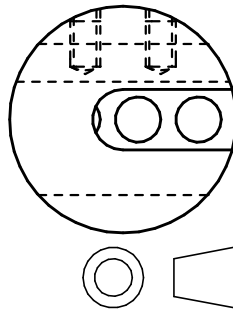


HARDWARE

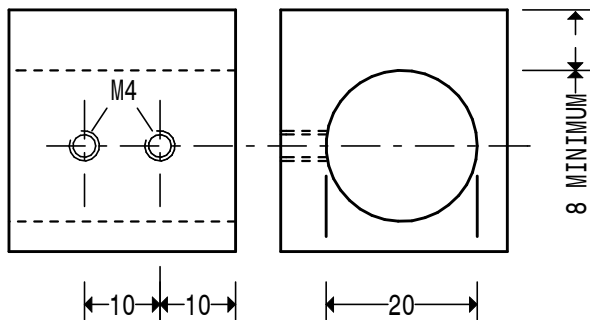
- 1 M4 X 8 SOCKET CAP SCREW 1 OFF
- 2 M5 X 10 SOCKET GRUB SCREW 1 OFF
- 3 M4 X 6 SOCKET GRUB SCREW 2 OFF

NOTE

SEE TEXT FOR METHOD OF MACHINING
DETAIL PARTS



MINI BORING HEAD ASSEMBLY



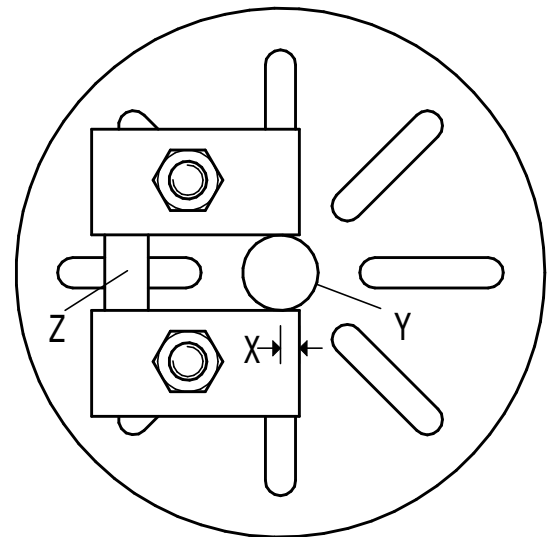
BORE TO BE A CLOSE FIT ON THE CUTTER HOLDER

NON QUOTED DIMENSIONS TO SUIT
AVAILABLE MATERIAL

TAPPING JIG



SK.1



- X. DIMENSION NO MORE THAN 8MM
 - Y. HEADSTOCK CENTRE FITTED
 - Z. SPACER. EXACTLY EQUAL TO
HEADSTOCK CENTRE DIAMETER
- BODY LOCATING FENCES SK.2**