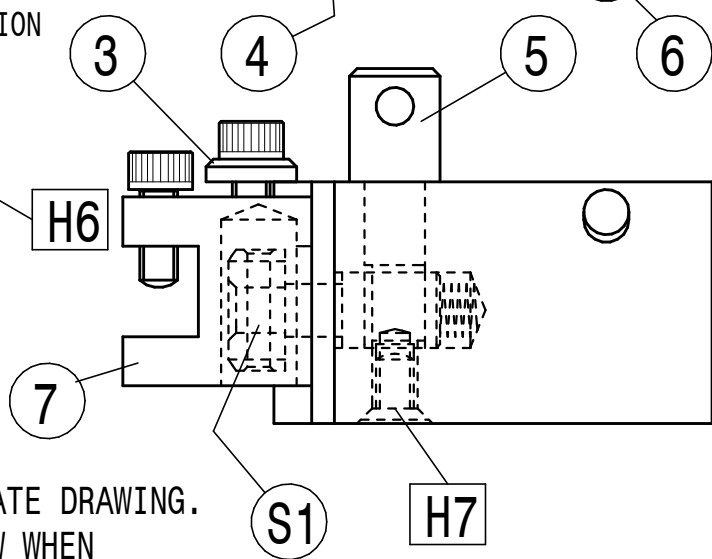
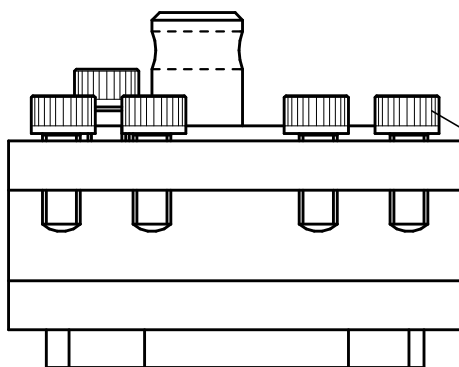
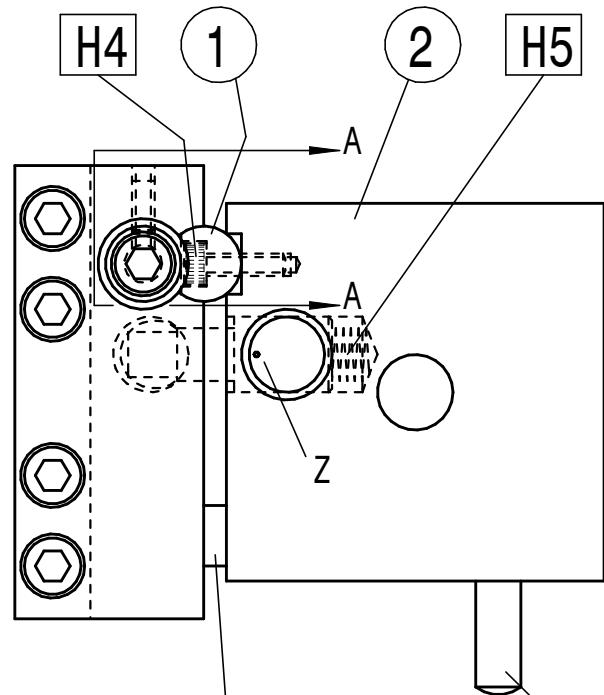


**HARDWARE**

- |                             |         |
|-----------------------------|---------|
| H1 COPPER PAD               | 1 OFF*  |
| H2 M3 X 8 SOCKET GRUB SCREW | 1 OFF*  |
| H3 M5 X 16 SOCKET CAP SCREW | 1 OFF*  |
| H4 M3 X 10 SOCKET CAP SCREW | 2 OFF** |
| H5 COMPRESSION SPRING       | 1 OFF** |
| H6 M5 X 12 SOCKET CAP SCREW | 4 OFF*  |
| H7 M5 X 8 SOCKET CSK SCREW  | 1 OFF** |

\* QUANTITY PER HOLDER.

\*\* QUANTITY PER MOUNTING POSITION



**NOTES**

S1 SUB ASSEMBLY, SEE SEPARATE DRAWING.

Z CENTRE PUNCH MARK TO SHOW WHEN TOOL HOLDER LOCK IS FULLY OPEN

**QUICK CHANGE LATHE TOOL HOLDER ASSEMBLY**