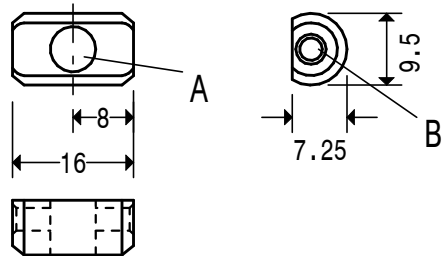


NOTES

X. RIVET AND FINISH FLUSH.

Y. AFTER ASSEMBLY FILE FLAT ON EITHER SIDE TO INCREASE THE CLEARANCE IN THE SLOT IN THE HOLDER.

CLAMP ASSEMBLY S1

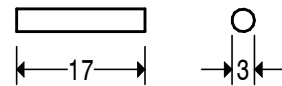


A. 6 DIA.
B. 3 DIA. SLIGHTLY COUNTERSINK AT BOTH ENDS.

MATL. 10 DIAMETER STEEL 230M07

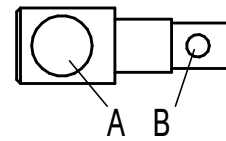
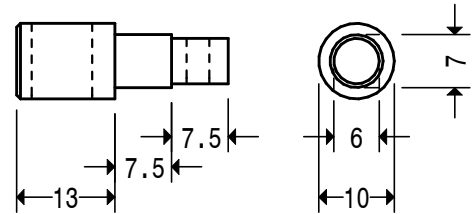
QTY. 1 OFF (OR 2 OFF SEE TEXT)

CLAMP PIECE S1-1



MATL. 3MM DIA. STEEL 230M07
QTY. 1 OFF (OR 2 OFF, SEE TEXT)

RIVET S1-2

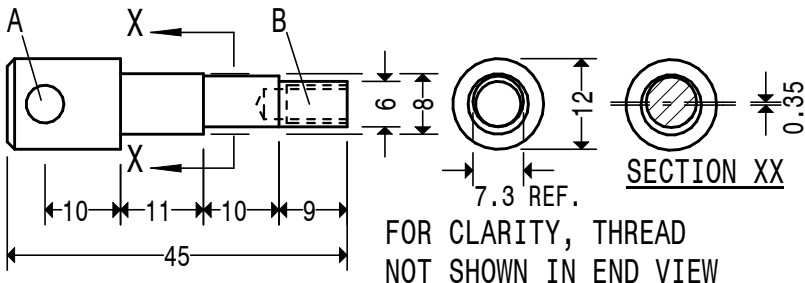


A. 8MM DIA.
B. 3MM DIA.
POSITION HOLES A AND B FROM MATING PARTS, SEE TEXT.

MATL. 12MM DIA. STEEL 230M07

QTY. 1 OFF (OR 2 OFF SEE TEXT)

OPERATING PIECE S1-3



FOR CLARITY, THREAD NOT SHOWN IN END VIEW

A. 5.2 B. M5 X 8 DEEP MATL. 12 DIA. STEEL 230M07

QTY. 1 OFF (OR 2 OFF SEE TEXT)

LOCKING SPINDLE 5