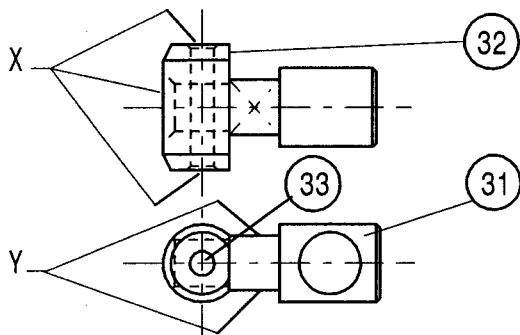


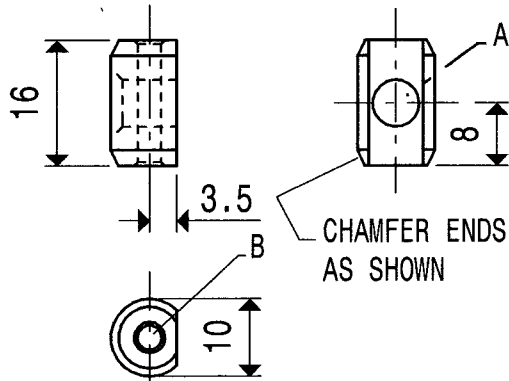
A. 3mm DIA
 B. 8mm DIA.
 POSITION HOLES A AND B
 FROM MATING PARTS.
 QUANTITY 2 OFF

OPERATING PIECE. 31



X. RIVET AND FINISH FLUSH
 WITH A FINE FILE.
 Y. FILE FLAT ON EITHER SIDE TO
 INCREASE CLEARANCE IN SLOT IN
 THE TOOL HOLDERS (2)

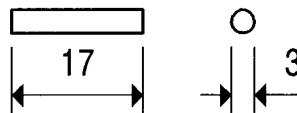
CLAMP ASSEMBLY. 3



A. 6mm DIAMETER
 SLIGHTLY CSK OUTER END.
 B. 3mm DIAMETER
 SLIGHTLY CSK BOTH ENDS.

QUANTITY 2 OFF.

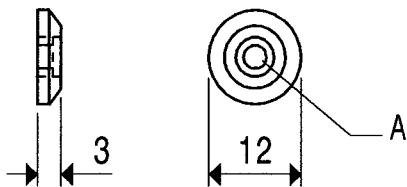
CLAMP PIECE. 32



QUANTITY 2 OFF.

RIVET. 33

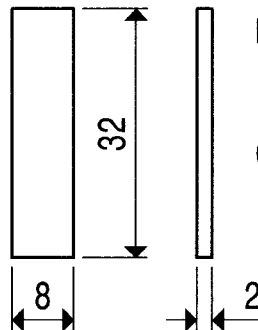
MATERIAL
 ALL 3 PARTS MADE FROM
 STEEL 230M07



A. M5 CB TOP TO ALLOW HEAD OF
 SCREW TO SEAT FULLY.

MATL. 12mm DIA. STEEL 230M07
 QUANTITY. 1 PER TOOL HOLDER

HEIGHT ADJUSTER WASHER 5



MATERIAL
 8 X 2 STEEL 070M20
 QUANTITY 2 OFF

SPACER. 7

QUICK CHANGE LATHE TOOL POST.

