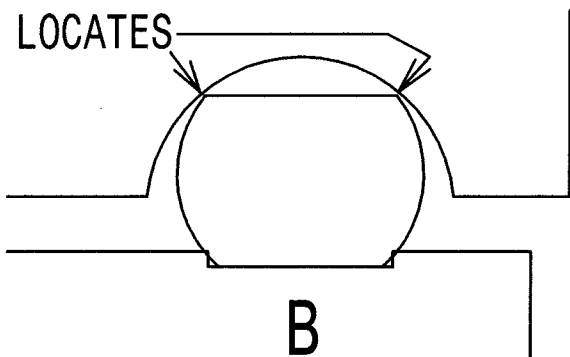
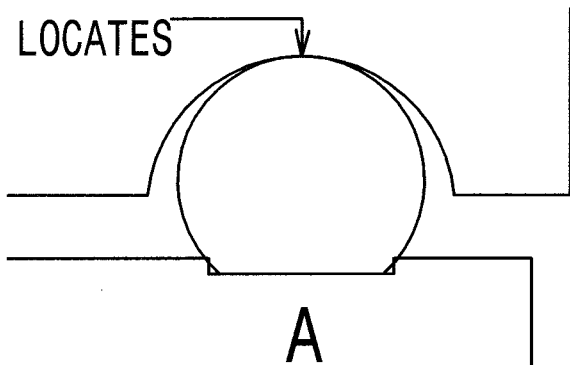
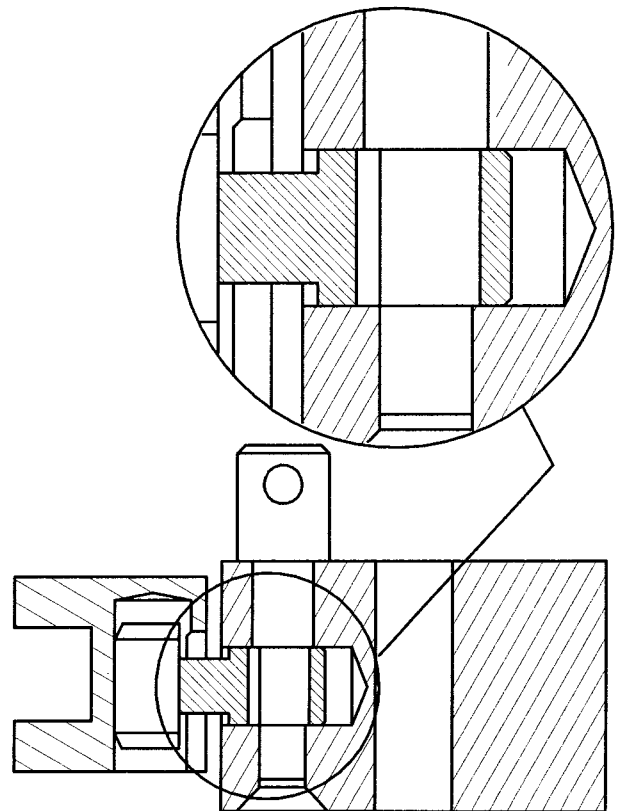


MATERIAL. 5 DIA. STEEL 230M07
 QUANTITY. 1 OFF

TOMMY BAR. 8



SHOWING EFFECT OF FLAT
 ON LOCATING KEY SK 1.



NOTE HOW, IN THE CLAMPED POSITION,
 THE HOLE IN THE OPERATING PIECE
 (31) DOES NOT ALIGN WITH THAT IN
 THE BODY (1). THIS MUST BE TAKEN
 ACCOUNT OF WHEN USING THE BODY
 AS A DRILLING JIG FOR DRILLING
 THE OPERATING PIECE.

CLAMP ASSEMBLY SK2.

QUICK CHANGE LATHE TOOL POST.