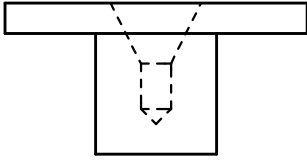
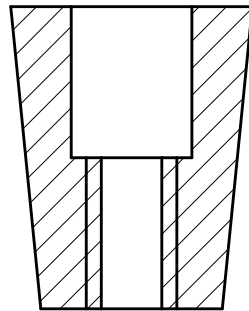
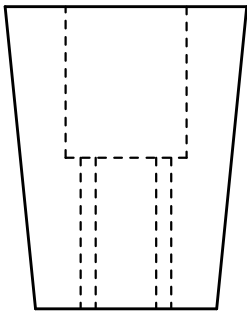


LOCATING PLUG
WITH SPIGOT.



CENTRE DRILLED
LOCATING PLUG.



ADAPTER NEED NOT BE FULL LENGTH
OF THE MORSE TAPER.

THE THREAD ENABLES THE ADAPTER TO
BE JACKED OUT FROM THE ROTARY
TABLE WITHOUT REMOVING IT FROM
THE MILLING MACHINE TABLE.

ADAPTER TO ENABLE PARALLEL
PLUGS TO BE USED WITH A ROTARY
TABLE HAVING A MORSE TAPER SK4.