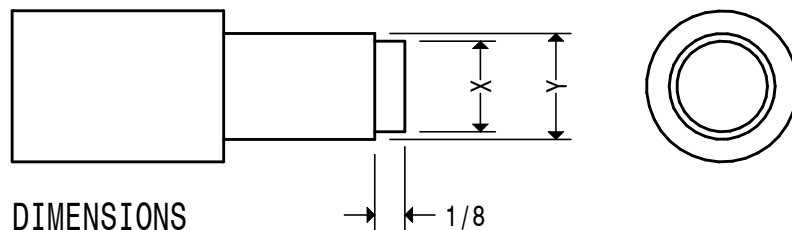


HOLE SIZES

- A. 6.2MM CSK FOR M6 SCREW
 - B. INITIALLY 2.1MM, FINALLY 7BA, SEE TEXT
 - C. M5
 - D. M8
 - E. M3, POSITION FROM BOXBED(30) SEE TEXT
 - F. SCRIBED LINES FOR POSITIONING THE STANDARD (11) AND THE SOLEPLATE (29)
- FIXTURE 1.**
MATERIAL 1/4" THICK

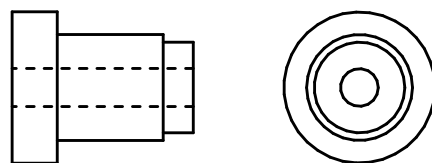


DIMENSIONS

X. Y - 0.005"

Y. SIZES REQUIRED 0.750" 0.625" 0.281"

IMPORTANT. SEE TEXT REGARDING THE 0.281" GAUGE
THE 0.750" GAUGE IS DUAL PURPOSE AND SHOULD
BE DRILLED 5.2 DIA. AND HAVE A 1" DIAMETER
HEAD. SEE BELOW



HOLE GAUGES.