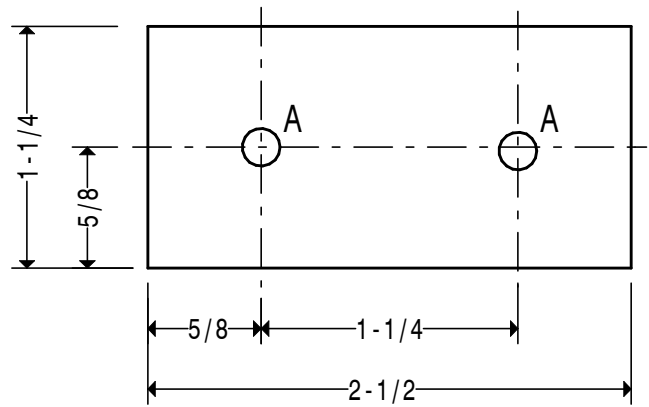


**HOLE SIZES**

A. 8.2 CSK TO 1/2" DIA.

MATERIAL 1/4" THICK

**CLAMP 2**

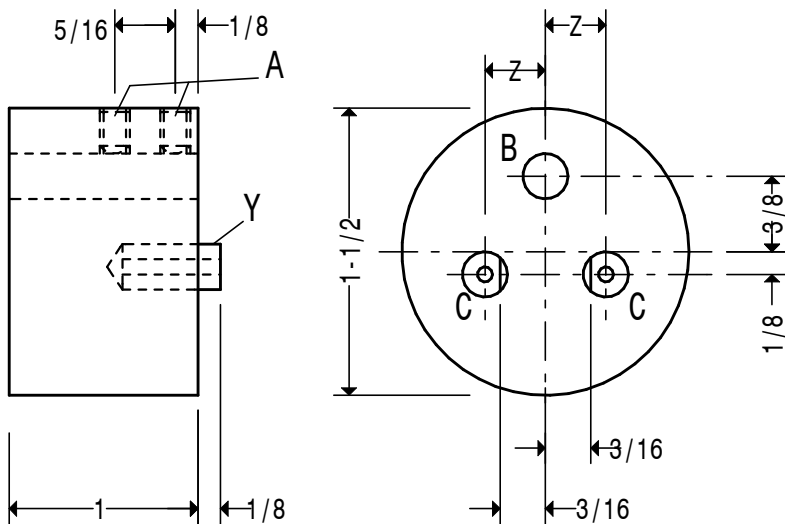


**HOLE SIZES**

A. 5.2

MATERIAL 3/16" THICK

**CLAMP 3**



**HOLE SIZES**

A. M4

B. 19/64"

C. 1/4"

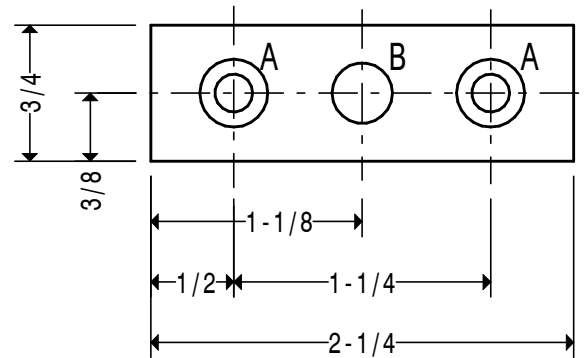
**NOTES**

Y. 1/4" DIAMETER PIN DRILLED WITH A THROUGH HOLE TO PERMIT AIR TO ESCAPE WHEN FITTING USING ADHESIVE

Z. MAKE A LITTLE UNDER 5/16" SO THAT A FLAT CAN BE FILED ON THE PIN TO ACHIEVE THE 3/16" DIMENSION.

MATERIAL 1-1/2" DIAMETER (OR LARGER)

**FIXTURE 3**



**HOLE SIZES**

A. 5.2 CSK FOR M5 SCREW

B. 8.5

MATERIAL 3/16" THICK

**CLAMP 1**