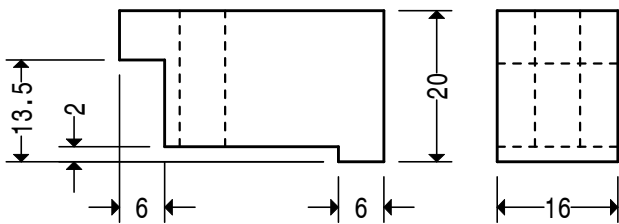


MATERIAL. CAST IRON BAR.

NOTE THAT CAST IRON BAR OFTEN COMES WITH A RADIUS ON EACH CORNER. IN THIS CASE, 40MM SQUARE MATERIAL MAY BE REQUIRED. HOWEVER, IT WOULD BE BEST TO CONTACT THE SUPPLIER AS 35MM SQUARE MATERIAL MAY BE OVERSIZE ENABLING IT TO BE MACHINED TO 34MM SQUARE.

HOLES. 2 OFF, M6

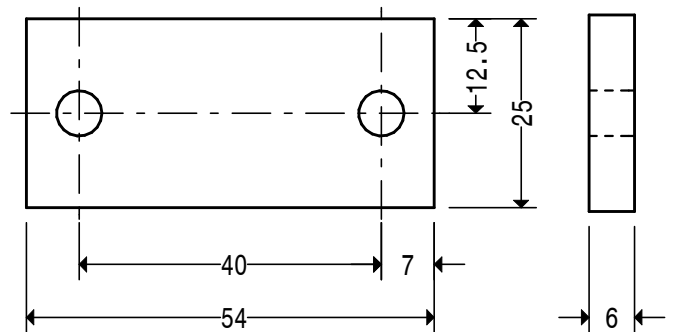


MATERIAL. 20 X 16 STEEL 070M20

MAKE OVERALL LENGTH, HOLE SIZE AND POSITION, TO SUIT PITCH OF TEE SLOTS AND STUD SIZE USED. SEE PHOTO 6.

IF THE VEE BLOCK IS TO BE USED IN MORE THAN ONE POSITION IT MAY BE NECESSARY TO MAKE MORE THAN ONE PAIR OF CLAMPS. USING A SLOT, RATHER THAN A SINGLE HOLE, MAY HELP IN THIS CASE.

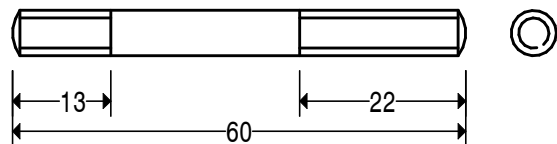
VEE BLOCK CLAMPS 2 OFF.



MATERIAL. 25 X 6 STEEL 070M20

HOLE SIZE 6.5

WORKPIECE CLAMP



MATERIAL. 6 DIA. STEEL 230M07

THREAD M6

WORKPIECE CLAMP STUDS 2 OFF.